

Misty Meadow Necklace

Project N2211

Kat Silvia

This long statement necklace features a mix of boho elements with gemstones and Swarovski Crystal Pearls knotted in a color blocked pattern for a stand out look, perfect for layering over a chunky fall sweater.

What You'll Need

Zola Elements Pendant Link, Mountain Meadow Arrow 27x37mm, 1 Piece, Antiqued Gold Tone

SKU: PZE-148

Project uses 1 piece



Dakota Stones Gemstone Beads, Smokey Quartz, Star Cut Faceted Round 8mm, 15.5 Inch Strand

SKU: SPQS-01

Project uses 50 pieces



Swarovski Crystal, 5810 Round Faux Pearl Beads 8mm, 25 Pieces, Iridescent Green

SKU: SWP-8044

Project uses 48 pieces



Griffin Silk Beading Cord & Needle Size 6 Brown

SKU: XCR-9619

Project uses 1 piece



22K Gold Plated 3.7mm Clamshells Knot Covers (50)

SKU: FCR-2060

Project uses 2 pieces



G S Hypo Cement Precise Applicator Essential!

SKU: XTL-1001

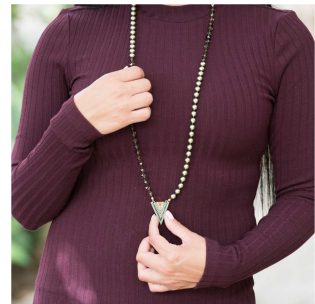
Project uses 1 piece



Recommended Tools:

[XTL-5518] Lindstrom EX Series - Round Nose Jewelry Pliers 5.25 Inches Long, [XTL-4001]

Beadsmith Bent Fine Point Tweezers For Bead And Pearl Knotting



Instructions

This necklace measures approximately 37 inches. To modify the length, simply adjust the length of beads knotted respectively.

1. Begin by watching our video: How to Do Pearl Knotting Using Tweezers. From what you learned in the video begin by tying a double knot and that will not pull through the clamshell. Thread the needle up through the clamshell.
2. Add a dab of GS Hypo Cement, close the clamshell and trim the silk cord. You are now ready to begin your knotting.
3. Start by making one knot then start adding the beads in the following order (one knot in between each): 23 pearls, 25 gemstones, 25 pearls, 25 gemstones. NOTE: My pattern is not even to account for the slight natural variation of the gemstone beads. Yours may be the same but by purchasing

this project bundle you will get a total of 50 pearls and a 15.5 inch strand of gemstone that are about 51 beads per strand, so please feel free to adjust accordingly.

4. Once you have added all of your beads and after the final knot, thread the silk through another clamshell. Tie a double knot, add a dab of glue, close the clamshell and trim the ends.

5. Finally take the pendant and attach one loop of the clamshell to one loop by gently bending it around the loop. Repeat on the other side, making sure your strand is not twisted.

The Swarovski Pearls have two different holes because of the way they are coated. You may find it easier to thread them on through the larger hole.