

Long Way Around Necklace

Project N2201

Kat Silvia

This long necklace is great for layering with you favorite Zola Elements designs.

What You'll Need

Matte Gold Plated Bulk Chain, Chevron Links 6.5mm, Sold By the Foot

SKU: CHA-0703

Project uses 8.5 Inches



Matte Gold Plated Round Rolo Chain 3mm Bulk By The Foot

SKU: CHA-9969

Project uses 23 Inches



Zola Elements Pendant Link, U-Shape Focal 58x50mm, 1 Piece, Satin Gold Tone

SKU: PZE-106

Project uses 1 piece



22K Gold Plated Open Jump Rings 4mm 21 Gauge (x100)

SKU: FJR-5240

Project uses 8 pieces



Matte Gold Plated Sleek Lobster Claw Clasps 12mm (6)

SKU: FCL-2539

Project uses 1 piece

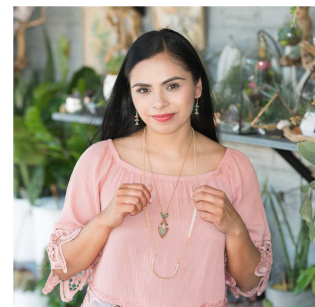


Recommended Tools:

[XTL-5600] Sharp Flush Cutter Pliers - For Cutting Beading Wire, 1 Piece, [XTL-5511]

Beadsmith Jeweller's Micro Pliers Chain Nose Flat Nose, [XTL-5514] Beadsmith Jewelry Fine

Round Nose Micro Pliers



Instructions

This necklace measures approximately 36 inches. To modify the length, simply adjust the length of chain on both sides respectively.

1. Begin by cutting two lengths of the matte gold rolo chain that are 9.5 inches each. Then cut two more lengths that are 2 inches each. Set these aside.
2. Cut two lengths of the matte gold chevron chain that are 4.25 inches each.
3. Open one jump ring and attach it the end of one length of rolo chain that is 9.5 inches. Close the jump ring.
4. Move to the other side of this chain. Attach another jump ring to this end of the chain and to the chevron chain (note: the chevron chain should be pointing down towards the center of the necklace.)
5. Move to the other side of the chevron chain. Attach another jump ring to this end of the chain and to a length of rolo chain that is 2 inches.

6. Move to the end of this chain and open one jump ring and attach it to this chain as well as to the curved bar link. Close the jump ring.
7. Now reverse the above steps to complete the necklace. When you have reached the top, attach one lobster clasp to the final jump ring.