

# Azure Waterfall Necklace

**Project N2069**

*Designer: Kat Silvia*

By mixing various shades of blue, this monochromatic and dynamic piece cascades in beautiful layers around the neck.

## What You'll Need

Sale! Czech Seed Bead Mix Lot Variety Shapes Cobalt Blue (2 oz.)

SKU: BCP-9957

Project uses 1 Mix



Czech Fire Polish Glass Beads 8mm Round Blue Tones Mix (50)

SKU: BCP-3853

Project uses 1 Strand



Czech Glass Druk 6mm Round Blue Tones Mix (50 Beads)

SKU: BCP-7653

Project uses 1 Strand



Beadalon Silver Plated Crimp Tubes 1.8mm (75 Beads)

SKU: FCR-1215

Project uses 14 pieces



Shiny Silver Tone Crimp Bead Covers 3mm (x144)

SKU: FCR-1053

Project uses 14 pieces



Silver Tone Tube Clasp 41.5mm Seven Rings Strands (2)

SKU: FCL-5514

Project uses 1 piece



Soft Flex Best Beading Wire .014 Inch - 30 Ft.

SKU: XCR-5143

Project uses 1 Spool

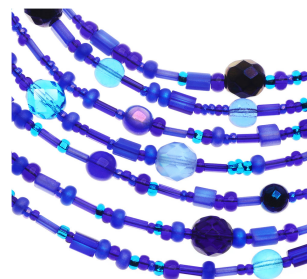
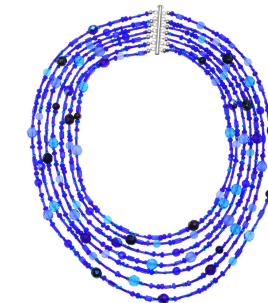
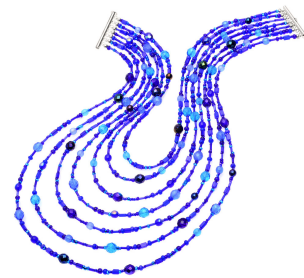


### Recommended Tools:

[XTL-5608] Xuron 4 In 1 Crimping Pliers - Works On 1, 2 And 3mm Crimps!, [XTL-5600] Xuron

Sharp Flush Cutter Pliers - Wire/Soft Flex, [XTL-3000] Bead Stopper- Stop Beads Sliding Off

Stringing Material



## Instructions

This finished necklace is about 16 inches at the smallest and hangs to about 24 inches. To adjust the length simply adjust each strand equally. There is

not set pattern for the placement of the beads. String them in any order you choose alternating between 8mm, 6mm and seed bead mixed beads.

1. Cut a length of beading wire 20 inches. Place a bead stopper two inches from one end.
2. String on 16 inches of beads.
3. Then string on one crimp tube. Thread the wire through the first loop of the tube clasp and back down through the crimp tube. Pull snug. Crimp the crimp tube. Snip any excess wire. Add a crimp cover.
4. Move to the other side of this strand, remove the bead stopper and repeat the above step.
5. This completes one strand. You will add the remaining strands in the following order:
6. Cut 21" of beading wire; 17" of beading
7. Cut 22" of beading wire; 18.5" of beading
8. Cut 24" of beading wire; 19.75" of beading
9. Cut 25" of beading wire; 21" of beading
10. Cut 27" of beading wire; 22.5" of beading
11. Cut 28" of beading wire; 24" of beading
12. You may need to adjust the lengths slightly to get it to lay the way you want. Start with the smallest and build your way down.
13. All done!