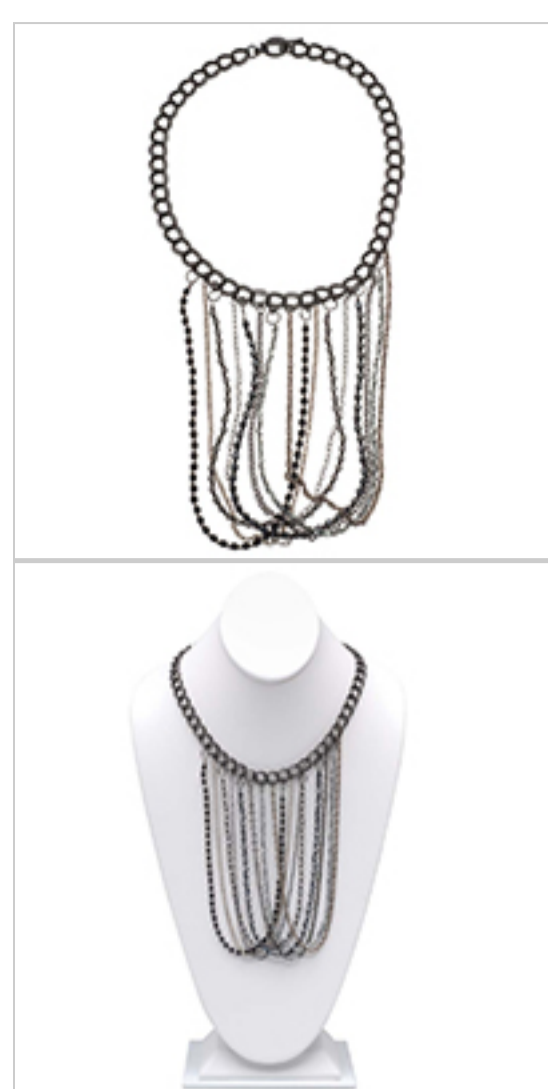


Looped Fringe Statement Necklace

Project N200

Designer: Andrea Morici

What do all super chic ladies have in common? They know how to accessorize! Let this ultra cool swaying fringe necklace be your statement piece this season.



What You'll Need

 Black Oxidized Plated Parallel Link Curb Chain 10mm Bulk By The Foot
SKU: CHA-4053
Project uses 2 feet

 Antiqued Silver Plated Round Rolo Chain 3mm Bulk By The Foot
SKU: CHA-9967
Project uses 1 foot


 Black Oxidized Plated Fine Delicate Cable Chain 1.8mm Bulk By The Foot
SKU: CHA-1121
Project uses 1 foot

 Gunmetal Steel Flat Link Cable Chain 4.3mm - Bulk By The Foot
SKU: CHA-9688
Project uses 1 foot

 Antiqued Silver Plated 3mm Thick Twisted Rope Chain Bulk By The Foot
SKU: CHA-9760
Project uses 1 foot

 Black Finish Pewter Large Tapered Toggle Clasp 20mm (1)
SKU: FCL-7704
Project uses 1 piece

 Czech Fire Polish Glass Beads 4mm Round 'Jet Matte' (50)
SKU: BCP-3489
Project uses 50 pieces

 Czech Fire Polish Glass Beads 4mm Round 'Hematite' (50)
SKU: BCP-3485
Project uses 50 pieces

 Miyuki Delica Seed Beads 10/0 'Matte Black' DBM0310 8 GR
SKU: DBM-0310
Project uses 100 pieces

 Miyuki Delica Seed Beads 10/0 'Matte Metallic Silver' DBM0321 8 GR
SKU: DBM-0321
Project uses 50 pieces

 Antiqued Silver Plated Diamond Cut Out 4mm Round Beads (100)
SKU: BMB-5173
Project uses 50 pieces

 Czech Seed Beads 8/0 Silver Lined Black Diamond (1 Ounce)
SKU: BCS-8219
Project uses 1 foot

 Soft Touch Best Beading Wire .010 Inch 30Ft Soft Flex
SKU: XCR-5413
Project uses 4 feet

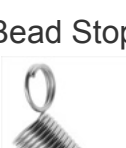
 Gun Metal Plated Closed Jump Rings 8mm 18 Gauge Gunmetal Plated (50)
SKU: FJR-4038
Project uses 8 pieces

 Black Finish Pewter Open Oval Jump Rings 6mm 20 Gauge (50)
SKU: FJR-6000
Project uses 16 pieces

 Black Finish Pewter Open Jump Rings 7.7mm 16 Gauge (25)
SKU: FJR-6001
Project uses 2 pieces

 Gun Metal Brass Crimp Beads 2mm x 1.5mm (100)
SKU: FCR-1253
Project uses 8 pieces

Specialized Tools

 Bead Stopper- Stop Beads Sliding Off Stringing Material
SKU: XTL-3000

Instructions:

- Cut a piece of the large, black finish double curb chain exactly forty-nine double links long (approximately seventeen and a half inches). Set this aside.
- Cut four pieces of Soft Touch beading wire at sixteen inches long each. Secure one end of each with a Bead Stopper (XTL-3000).
- Onto the first strand, thread twelve and a half inches of 8/0 silver lined black diamond seed beads.
- Onto the second strand, thread twelve and a half inches of alternating 4mm hematite Czech fire polish beads and 10/0 matte black Miyuki delicas. Secure the end and set this strand aside.
- Onto the third strand, thread twelve and a half inches of alternating 4mm antiqued silver plated filigree round beads and 10/0 matte black Miyuki delicas. Secure the end and set this strand aside.
- Onto the fourth strand, thread twelve and a half inches of alternating 4mm matte black Czech fire polish beads and 10/0 matte metallic silver Miyuki delicas. Secure the end and set this strand aside.
- Onto each end of all four strands, thread a crimp bead-but do not crimp it just yet.
- Thread each end through an 8mm closed gunmetal jump ring, back through the crimp bead and several consecutive beads in the strand, pull the strand snug, and crimp the crimp bead. Trim off all excess wire and set these strands aside.
- Open sixteen black oval jump rings.
- Lay your black double curb chain flat in front of you. Counting from left to right, find the seventeenth double link.
- Use one of the oval jump rings to connect one end of the antiqued silver plated twisted rope chain (CHA-9760) to the seventeenth double link.
- Still counting from left to right, locate the twenty fifth link. This is the center-most link. Attach the opposite end of the twisted rope chain to this link, using an oval jump ring.
- Using another oval jump ring, attach one end of the first Soft Touch beaded strand (the strands containing all 8/0 seed beads) to the eighteenth link in the double curb chain. This is the link directly to the right of where the twisted rope chain begins.
- Attach the other end of this strand to the twenty sixth link, or the link directly to the right of where the twisted rope chain ends.
- Continue adding strands in this manner, beginning and ending on the link to the right of where the previous strand was placed. The order is as follows: After the seed bead strand add the gunmetal cable chain, the hematite fire polish and black delica strand, the thin black cable chain, the silver filigree round bead and black delica strand, the antiqued silver rolo chain, and finally the matte black fire polish and matte silver delica strand. This last strand begins on the link directly to the left of where the twisted rope chain ends.
- Close all of the oval jump rings once more.
- Lastly, open two large black finish jump rings. Use them to attach the toggle clasp to either end of the black double curb chain. Close these jump rings again, and you're done!