

## Into the Night Necklace

Project N198

Designer: Andrea Morici

The deep, dark brilliance of the new Swarovski color, Crystal Silver Night, makes this necklace perfect for a night out on the town.



### What You'll Need

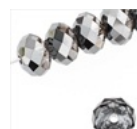
SWAROVSKI ELEMENTS Crystal Helios Pendant 6040 40mm Silver Night (1)  
SKU: SWC-99922  
Project uses 1 piece



SWAROVSKI ELEMENTS Crystal 5180 14mm Square Double Hole Beads Silver Night (2)  
SKU: SWC-23998  
Project uses 1 piece



SWAROVSKI ELEMENTS Crystal Rondelle Beads 5040 6mm Silver Night (10)  
SKU: SWC-56998  
Project uses 10 pieces



Gun Metal Plated Closed Jump Rings 8mm 18 Gauge Gunmetal Plated (50)  
SKU: FJR-4038  
Project uses 2 pieces



Gun Metal Plated Open Jump Rings 6mm 19 Gauge (100)  
SKU: FJR-5296  
Project uses 1 piece



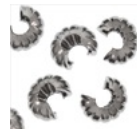
Gun Metal Plated Curved Lobster Clasps 12mm (6)  
SKU: FCL-4731  
Project uses 1 piece



Gun Metal Brass Crimp Beads 2mm x 1.5mm (100)  
SKU: FCR-1253  
Project uses 2 pieces



Gun Metal Brass Fluted Crimp Bead Covers 4mm (144)  
SKU: FCR-1083  
Project uses 2 pieces



Czech Seed Beads 8/0 Silver Lined Black Diamond (1 Ounce)  
SKU: BCS-8219  
Project uses 62 pieces



Czech Seed Beads 6/0 Black Diamond Silver Foil Lined 1 oz  
SKU: BCS-6219  
Project uses 15 inches



Miyuki Delica Seed Beads 11/0 Steel Metallic DB021 7.2 Grams  
SKU: DB-021  
Project uses 100 pieces



Miyuki Delica Seed Beads 10/0 Steel Metallic DBM0021 8 GR  
SKU: DBM-0021  
Project uses 64 pieces

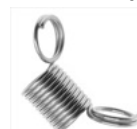


Soft Touch Best Beading Wire .010 Inch 30Ft Soft Flex  
SKU: XCR-5413  
Project uses 2 feet



### Specialized Tools

Bead Stopper- Stop Beads Sliding Off Stringing Material  
SKU: XTL-3000



Xuron Sharp Flush Cutter Pliers - Wire/Soft Flex  
SKU: XTL-5600



### Instructions:

1. Begin by using your flush cutters to cut two one foot lengths of Soft Touch beading wire. Secure one end of each with a Bead Stopper.
2. Onto each strand, thread nine 8/0 silver lined black diamond Czech seed beads, with an 11/0 steel metallic Miyuki Delica between each. Thread another 11/0 Delica at either end of both strands.
3. Find the center of each strand, and move the beads that you have just strung there.
4. Remove the Bead Stopper, and thread both strands (making sure the beads are still in the middle of each) through the Swarovski Helios pendant. Gather both ends of one of the strands together and secure them with a bead stopper once again.
5. Gather both ends of the other strand together, and thread them through one of the holes in the 14mm Swarovski double-holed square bead. Secure the ends with a bead stopper and set it down.
6. Remove the bead stopper from the other strand, and thread both ends through the other hole in the 14mm Swarovski double-holed square bead.
7. Onto each strand, thread the following: one inch of alternating 8/0 silver lined black diamond Czech seed beads and 11/0 steel metallic Miyuki Delicas. Now thread BOTH strands through a single Swarovski 6mm rondelle. Repeat this beading sequence two more times.
8. Gather both strands together and thread them through another single 8/0 seed bead, and another rondelle. Repeat this sequence one more time.
9. Onto both strands together, string five inches of alternating 6/0 black diamond seed beads and 10/0 steel delicas.
10. Finally, onto both strands together, thread a crimp bead- but do not crimp it just yet. Thread both strands together through an 8mm closed jump ring, back through the crimp bead, pull snug, and crimp. Trim excess wire off of this side.
11. Repeat steps 7-10 on the other side of the necklace.
12. Open a 6mm jump ring and use it to attach the lobster clasp to one end of the necklace. Close the jump ring once more and you're done!