

## Lavender Sky Earrings

**Project E742** [Skill Level: Beginner]  
*Designer: Julie Bean*

The light amethyst and cyclamen opal color of the SWAROVSKI ELEMENTS crystals in this earring set captures the feel of the season. I think of lavender flowers and the cool shades of sunset when looking at this design. What do you see?



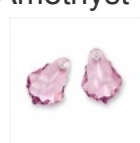
### What You'll Need

Black Finish Lead-Free Pewter Hexagon Rondelle Beads 3mm (50)



SKU: BMB-5626  
Project uses 12 pieces

SWAROVSKI ELEMENTS Crystal Baroque Pendant 6090 16mm Light Amethyst (2)



SKU: SWC-9692  
Project uses 2 pieces

SWAROVSKI ELEMENTS Crystal Rondelle Beads 5040 6mm Cyclamen Opal AB (10)



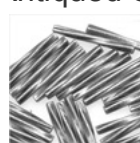
SKU: SWC-56135  
Project uses 8 pieces

Czech Seed Beads 8/0 Silver Lined Black Diamond (1 Ounce)



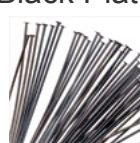
SKU: BCS-8219  
Project uses 4 pieces

Antiqued Silver Plated Twisted Tube Beads 13mm (72 Beads)



SKU: BMB-5319  
Project uses 4 pieces

Black Plated Brass Head Pins 2 Inches / 21 Gauge (x50)



SKU: FHP-7121  
Project uses 8 pieces

Antiqued Silver Plated 4 Ring Drop Chandelier Earring Parts 22mm (2)



SKU: FEA-9911  
Project uses 2 pieces

Gunmetal Plated Ball Earring Hooks (x100)



SKU: FEA-3007  
Project uses 2 pieces

### Specialized Tools

Xuron Sharp Flush Cutter Pliers - Wire/Soft Flex



SKU: XTL-5600

Beadsmith Jeweller's Micro Pliers Chain Nose Flat Nose



SKU: XTL-5511

Beadsmith Jewelry Fine Round Nose Micro Pliers



SKU: XTL-5514

### Instructions:

1. Take a head pin and place onto it: 1 black finish 3mm hexagon rondelle bead, 1 SWAROVSKI ELEMENTS crystal 6mm rondelle in cyclamen opal, 1 antique silver plated twisted tube bead, another hexagon bead. Create a simple wire loop after the last bead. Cut off remaining wire with flush cutters. Make two of these.
2. Cut the head off of one head pin. Create a simple wire loop which is large enough to act as a bail for your SWAROVSKI ELEMENTS crystal baroque pendant in light amethyst. See photo for scale. Once you have created that simple wire loop, open it the same way you would open a jump ring, thread it through your baroque pendant, and close the loop back up. Now thread onto the pin: 1 black finish 3mm hexagon rondelle bead, 1 Czech seed bead size 8/0 in silver lined black diamond, 1 SWAROVSKI ELEMENTS crystal 6mm rondelle in cyclamen opal, another seed bead, and another hexagon bead. Create a simple wire loop after the last bead and cut off excess wire with flush cutters.
3. Onto one head pin place 1 SWAROVSKI ELEMENTS crystal 6mm rondelle in cyclamen opal. Create a simple wire loop after the bead and cut off excess wire with flush cutters.
4. Orient your antique silver plated 4 ring drop chandelier earring part so that one loop is on top and 3 loops are sticking downward.
5. Open the loop at the base of your earring hook and connect it to the top loop. Close the loop back up.
6. Open the loop at the top of the single rondelle dangle and link it to the middle interior hoop of your drop chandelier earring part. Close the loop back up.
7. For your two identical dangles, open each of their loops and attach them to the bottom side loops of your chandelier earring part. Close the loops back up.
8. Finally, open the loop on the dangle with the baroque pendant and attach it to the bottom middle loop of your chandelier earring part. Close the loop back up.
9. Please repeat the instructions above to make your second earring.
10. Have fun wearing these earrings!

Check package quantities for each component. You may have extra material to make more than one finished project, or will have leftovers for other projects. In some cases, adding on just one more package of a component may be all you need to make multiple pieces.

### Variations

Make this same pair of earrings in a wide variety of gorgeous SWAROVSKI ELEMENTS crystal colors!

When substituting in items, pay attention to sizes and styles to make sure all your pieces will fit together.



**Keywords:** dressy, crystal dangles