

Blueberry Dance Earrings

Project E2284

Kat Silvia

Lovely little Swarovski Crystal Navette stones look like leaves of a blueberry bush in these antiqued silver earrings.

What You'll Need

Gita Jewelry Stone Setting for Swarovski Crystal, Leverback Earrings for PP32 & 8x4mm Navettes, 1 Pair, Rhodium Plated

SKU: FEA-9725

Project uses 1 Pair



Swarovski Crystal, 1088 Xirius Round Stone Chatons pp32, 24 Pieces, Sapphire F

SKU: SWCH-624109

Project uses 2 pieces



Swarovski Crystal, 4228 Xilion Navette Fancy Stone 8x4mm, 2 Pieces, Emerald F

SKU: SWCR-4613

Project uses 4 pieces



G S Hypo Cement Precise Applicator Essential!

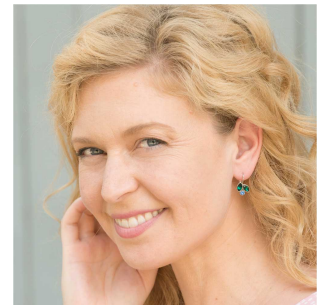
SKU: XTL-1001

Project uses 1 piece



Recommended Tools:

[XTL-4004] Beadsmith Magical Rhinestone Pick Up Tool With Cleaning Kit - Great For Placing Flatback Rhinestones



Instructions

By following the instructions below you will make one earring. Repeat all instructions to make the second earring.

1. Please watch our video: How to Use Glue to Set Swarovski Crystal Fancy Stones into Gita Jewelry Components.
2. From what you learned in the video, place a dab of glue into each well of the setting. Place the Navette stones and the chaton into the setting.

We recommend waiting at least 24 hours before wearing to allow the glue to fully set.