

Blue Raspberry Tassel Earrings

Project E2226

Kat Silvia

A classic silhouette of a long earring is given a freshness with a Swarovski Crystal coin pearl and gold bacon beads.

What You'll Need

Swarovski Crystal, 5860 Coin Faux Pearl Beads 12mm, 2 Pieces, Iridescent Dark Blue

SKU: SWP-7137

Project uses 2 pieces



Nylon Cord Pendant, Tassel with Gold Tone Open Jump Ring 30mm, 10 Pieces, Dark Raspberry Red

SKU: PTS-107

Project uses 2 pieces



Swarovski Crystal, 5328 Bicone Beads 4mm, 24 Pieces, Crystal Aurum 2X

SKU: SWBI-1410

Project uses 4 pieces



22K Gold Plated Open Eye Pins 21 Gauge 2 Inches (x50)

SKU: FHP-6220

Project uses 2 pieces



22K Gold Plated Long Elegant Earring Hooks 25mm (50)

SKU: FEA-3030

Project uses 2 pieces

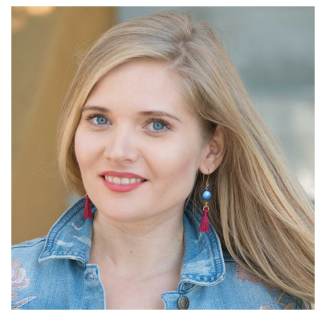


Recommended Tools:

[XTL-5600] Sharp Flush Cutter Pliers - For Cutting Beading Wire, 1 Piece, [XTL-5511]

Beadsmith Jeweller's Micro Pliers Chain Nose Flat Nose, [XTL-5514] Beadsmith Jewelry Fine

Round Nose Micro Pliers



Instructions

By following the instructions below you will make one earring. Repeat all instructions to make the second earring.

1. Take one eye pin and string on one bicone, one coin pearl and one bicone. Make a simple wire loop that faces perpendicular to the other loop at the bottom.
2. Move to the bottom loop and gently open it same as you would a jump ring and attach it to the jump ring on the tassel. Close the loop.
3. Move to the top side of this eye pin and open it, then attach it to one earring hook. Close the loop.