

## Night Rain Crescent Earrings

Project E2195

*Kat Silvia*

A classic combination of black and gold shows off the sleek geometric crescent chain and Swarovski Raindrop pendants.

### What You'll Need

22K Gold Plated Open Jump Rings 5mm 21 Gauge (50)

SKU: FJR-5457

Project uses 2 pieces



Bullet Clutch Earring Backs, Hypo Allergenic with Pad 7x11mm, 50 Pieces, Gold Tone

SKU: FEA-1017

Project uses 2 pieces



Earring Posts, Dagger with Loop 15mm 12 Pieces, Gold Plated

SKU: FEA-02006

Project uses 2 pieces



Bulk Chain, Crescent Moon Links 8mm, Sold By The Foot, Gold Tone

SKU: CHA-1209

Project uses 2.5 Inches



Swarovski Crystal, 6022 Xirius Raindrop Pendants 14mm, 2 Pieces, Jet

SKU: SWBB-2207

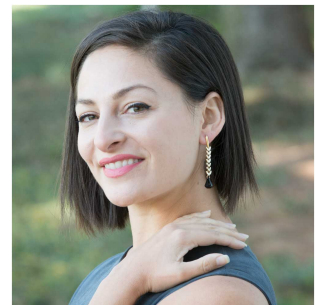
Project uses 2 pieces



### Recommended Tools:

[XTL-5511] Beadsmith Jeweller's Micro Pliers Chain Nose Flat Nose, [XTL-5514] Beadsmith

Jewelry Fine Round Nose Micro Pliers



### Instructions

1. Please watch our video: How to Make Simple Drop Earrings using Crescent Moon Chain. In this video you will see how to use this unique chain as well as how to finish it off with a crystal pendant and earring post.