

Rain Storm Earrings

Project E2145

Kat Silvia

These post earrings showcase the Iridescent Light Blue Swarovski Crystal Pearls hanging delicately from hammered teardrops.

What You'll Need

Silver Plated Stampings Dapt Hammered Fat Drops 18mm (2)

SKU: PND-5730

Project uses 2 pieces



Surgical Steel Flat 10mm Glue On Earring Posts (10 Pairs)

SKU: FEA-1612

Project uses 2 pieces



Bullet Clutch Earring Backs, Hypo Allergenic with Pad 7x11mm, 50 Pieces, Silver Tone

SKU: FEA-1016

Project uses 2 pieces



Swarovski Crystal, 5810 Round Faux Pearl Beads 8mm, 25 Pieces, Iridescent Light Blue

SKU: SWP-8038

Project uses 2 pieces



Silver Plated Head Pins 1 Inches Long/21 Gauge (50)

SKU: FHP-6304

Project uses 2 pieces



CASTIN CRAFT Casting Epoxy Resin Opaque Blue Pigment Dye 1 Oz

SKU: TRC-84

Project uses 1 piece



Easy Cast Clear Casting Epoxy Enamel Resin 8 oz

SKU: TRC-51

Project uses 1 piece



CASTIN CRAFT Casting Epoxy Resin Opaque Pearl Pigment Dye 1 Oz

SKU: TRC-80

Project uses 1 piece



Easy Mold Silicone Molding Putty for Casting and Jewelry Making 1/2 Pound

SKU: TRC-60

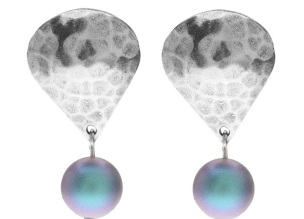
Project uses 1 piece



E6000 Industrial Strength Glue Adhesive (0.18 fl oz)

SKU: XTL-1054

Project uses 1 piece



Recommended Tools:

[TRC-600] Art Mechanique, ICE Resin Mixing Cups & Stir Sticks, 5 Pack, [XTL-5600] Xuron
Sharp Flush Cutter Pliers - Wire/Soft Flex, [XTL-5511] Beadsmith Jeweller's Micro Pliers
Chain Nose Flat Nose, [XTL-5514] Beadsmith Jewelry Fine Round Nose Micro Pliers

Instructions

For this project you will make both earrings at the same time.

1. To begin, add a dab of glue to the pad of one earring post. Place it in the center of the back of the dapt hammer stamping. Repeat for the second earring. Allow to dry for at least an hour before proceeding.
2. Next please watch the video: Using Silicone Molding Putty for Leveling Resin. To learn how to mix your molding putty please watch the video: How to Make Silicone Molds Using 2-part Mold Putty. From what you learned in these two videos mix a large gumball size of parts A and B, turn the earrings over and press them into the mold, making sure they are perfectly level. Please note that the working time for the silicone mold is only about 15 min so you must work quickly. Once you have set the earrings into the mold allow to dry overnight.
3. Please watch our video: How to Use Easy Cast Clear Casting Epoxy Resin. From what you learned in the video, mix a cup of resin. Carefully add the pigment to create the right color. Add about two drops of blue and two drops of white.
4. Carefully drip the resin into the well of the earring back, covering the earring post. Make sure to not pour over the hole. Allow to dry at least 48 hours for a full cure.
5. Once dry, remove the earrings from the mold.
6. String one pearl on one head pin, make a simple wire loop. Open the loop the same as you would a jump ring and attach it to one of the earring pendants. Close the loop. Repeat for the second earring.
7. Attach the earring backs and you're all done!