

## Margot in Montana Blue

**Project E2008** [Skill Level: Beginner]  
*Designer: Kat Silvia*

The Vintaj Natural Brass drop pendant makes a wonderful chandelier earring with the SWAROVSKI ELEMENTS Montana Blue pear pendant as it's focal bead.



### What You'll Need

Vintaj Natural Brass Chandelier Bohemian Drop Pendant 19.5x41.5mm (2)



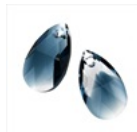
SKU: PND-7394  
Project uses 2 pieces

SWAROVSKI ELEMENTS Crystal Bicone Pendant Beads 6301 8mm Crystal (8)



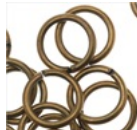
SKU: SWC-3400  
Project uses 4 pieces

SWAROVSKI ELEMENTS Crystal Pear Pendant Beads 16mm Crystal / Montana Blend (2)



SKU: SWC-4016  
Project uses 2 pieces

Antiqued Brass Open Jump Rings 7mm 19 Gauge (20)



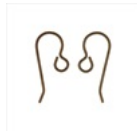
SKU: FJR-5175  
Project uses 6 pieces

Vintaj Natural Brass 4x3mm Small Cable Chain - Sold By The Foot



SKU: CHA-10071  
Project uses 1 foot

Vintaj Natural Brass Classic French Ear Wire 20mm (2 Pair)



SKU: FEA-6620  
Project uses 2 pieces

### Specialized Tools

Beadsmith Jeweller's Micro Pliers Chain Nose Flat Nose



SKU: XTL-5511

Beadsmith Jewelry Fine Round Nose Micro Pliers



SKU: XTL-5514

Xuron Sharp Flush Cutter Pliers - Wire/Soft Flex



SKU: XTL-5600

### Instructions:

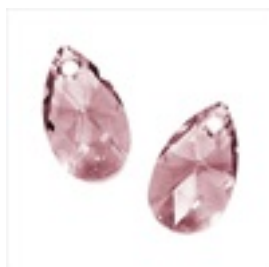
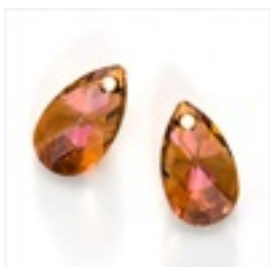
By following the instructions below, you will make one earring. Repeat all instructions to make the second earring.

1. Start by cutting off 6" of chain.
2. Open and attach three jump rings to the three holes at the bottom of the pendant. Leave the jump rings open.
3. On one of the outside rings place the last chain link on one side of the chain. Scoop the chain approx 4" to bring to the other outside jump ring and place a chain link onto this jump ring. Then scoop back to the first jump ring with the remaining amount of chain to create a tiered effect.
4. Slide a bicone crystal pendant onto one of the outer jump rings, placing it in front of the chain. Close the jump ring. Repeat this step on the other outer jump ring.
5. Slide the crystal pear pendant onto the middle jump ring. Close that jump ring.
6. Open the loop at the base of the earring finding, the same way you would a jump ring, and attach it to the top of the Vintaj pendant. Close the loop to secure.

### Variations

Try different center pear pendant beads with contrasting colors too!

When substituting in items, pay attention to sizes and styles to make sure all your pieces will fit together.



**Keywords:** Vintaj Natural Brass, Chandelier, earrings, SWAROVSKI ELEMENTS, Vintaj Project, btq-vintagelook