

Christmas Baubles Bracelet

Project B790

Julie Bean

Looking much like dozens of gold christmas balls and sparkly red and green ornaments, this bracelet made of charm chain and Swarovski crystal channel charms is both festive and easy to make. Create one for yourself or to give as a hostess gift this holiday season.

What You'll Need

Bulk Chain, with 4mm Round Bauble Cluster Links, Sold By The Inch, Gold Tone Brass

SKU: CHX-2059

Project uses 7 inches



BeadSmith Magnetic Clasp, Round Capsule 9x8mm, 2 Sets, 22K Gold Plated

SKU: FCL-6813

Project uses 1 piece



22K Gold Plated Open Jump Rings 4mm 20 Gauge 22k Gold Plated (100)

SKU: FJR-3914

Project uses 18 pieces



SWAROVSKI ELEMENTS Gold Plated Channel Crystal Charm Siam 7mm (8)

SKU: SWFA-1023

Project uses 8 pieces



SWAROVSKI ELEMENTS Gold Plated Channel Crystal Charm Emerald 7mm (8)

SKU: SWFA-1027

Project uses 8 pieces

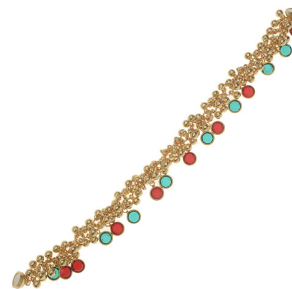


Recommended Tools:

[XTL-5600] Xuron Sharp Flush Cutter Pliers - Wire/Soft Flex, [XTL-5511] Beadsmith Jeweller's

Micro Pliers Chain Nose Flat Nose, [XTL-0020] Baby Wubbers Quality Fine Chain Nose

Jeweller's Pliers



Instructions

Note: This project makes a bracelet that is 7.5 inches long including the clasp. If you want to make a longer bracelet, please order more of the chain.

1. To see how to make this project from start to finish, please watch the video: [How to Make a Charm Chain Bauble Christmas Bracelet](#)
2. In the course of the video you will learn how to use charm chain, how to open and close jump rings, and how to attach a magnetic clasp.