

# Portsmouth Bracelet in Greenery

## Project B7052

Rachel Zaimont

A fresh, floral palette featuring Pantone 2017 color of the year Greenery enlivens this bead woven bracelet comprised of Czech glass Es-O beads and Swarovski crystal pearls.

## What You'll Need

Czech Glass, Es-O Mini 2-Hole Beads 4mm, 5 Grams, Pastel Olivine

SKU: BCP-07005

Project uses 100 pieces



Swarovski Crystal, 5810 Round Faux Pearl Beads 6mm, 50 Pieces, Pearlescent White

SKU: SWP-6076

Project uses 9 pieces



Swarovski Crystal, 5810 Round Faux Pearl Beads 3mm, 50 Pieces, Rosaline

SKU: SWP-3012

Project uses 36 pieces



Toho Seed Beads, Round 11/0 Semi Glazed, 8 Gram Tube, Rainbow Clover

SKU: JSK-0415

Project uses 1 tube



Swarovski Crystal, 5810 Round Faux Pearl Beads 8mm, 25 Pieces, Pearlescent White

SKU: SWP-8076

Project uses 1 piece



FireLine Braided Beading Thread, 6lb Test and 0.006 Thick, 15 Yard Mini Spool, Crystal Clear

SKU: XCR-1288

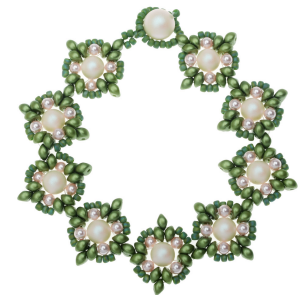
Project uses 10 feet



### Recommended Tools:

[XTL-5700] Fiskars 5 Precision Tip Scissors - Super Sharp, [XTL-3006] Beadsmith English

Beading Needles Size 12 (4 Needles)



## Instructions

These instructions will make a 7 inch bracelet. For a longer or shorter bracelet, adjust the number of beaded units you weave.

1. To see how to make this bracelet from start to finish, please watch our video: How to Bead Weave the Portsmouth Bracelet using 2-Hole Es-O Beads and Swarovski Crystal Pearls. In this video you will learn how to weave the beaded units of the bracelet and make the beaded button clasp.

2. Enjoy your bracelet!