

Winter Wonderland Loom Bracelets

Project B2387

Kat Silvia

A snowy duo of loom bracelets have a traditional winter sweater pattern and bring to life this exclusive blue and white palette of Toho seed beads.

What You'll Need

Exclusive Beadaholique Designer Palette, Toho Seed Bead Mix, Round 11/0, 32 Grams, Winter Wonderland

SKU: JK-0082

Project uses 1 piece



NYMO Nylon Beading Thread Size D for Delica Beads Dark Blue 64YD (58 Meters)

SKU: XCR-8906

Project uses 1 piece



NYMO Nylon Beading Thread Size D for Delica Beads White 64YD (58 Meters)

SKU: XCR-8901

Project uses 1 piece



Beadalon Slide Connectors, with Extension Clasps for Multi-Strand Projects 20x5mm, 1 Set, Silver

SKU: FCL-9311

Project uses 2 pieces



E6000 Industrial Strength Glue Adhesive (0.18 fl oz)

SKU: XTL-1054

Project uses 1 piece



Recommended Tools:

[XTL-6119] Beadalon Jewel Loom Kit - Weave Necklaces Bracelets And More!, [XTL-3030]

Beadalon, Jewel Loom Needles 3.125 / 8cm Long, 6 Pieces, [XTL-5614] BeadSmith Tools,

Thread Snips 4.25 Inches Long, 1 Piece, [XTL-5511] Beadsmith Jeweller's Micro Pliers Chain

Nose Flat Nose, [XTL-9920] Beadaholique Bead Mat, 12.5x9.25 Inches, 1 Piece



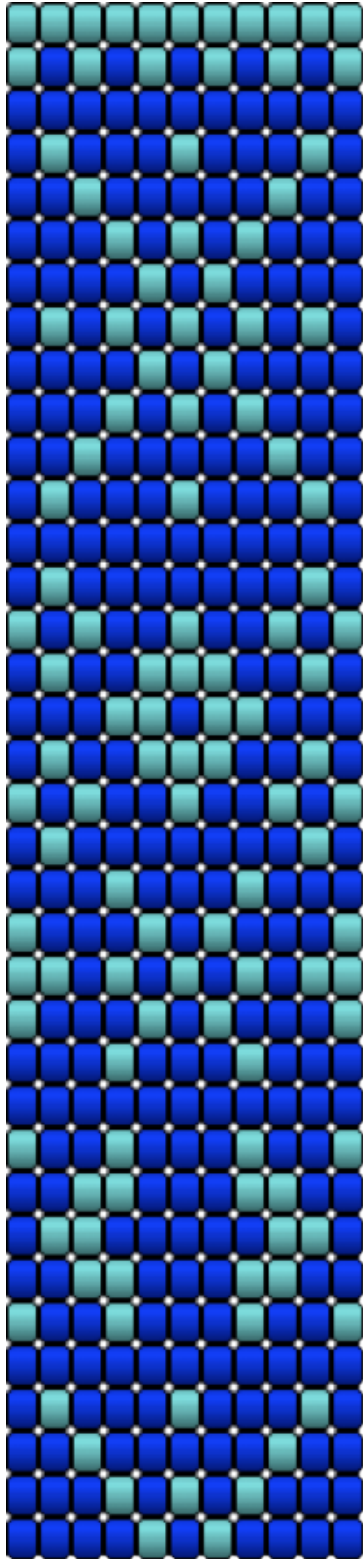
Instructions

This bracelet measures approximately 6.5 inches. To modify the length, simply adjust the length woven respectively. Please see our Printer Friendly PDF for Full Color Beading Pattern. You will also need a scrap of wire or a toothpick for this project.

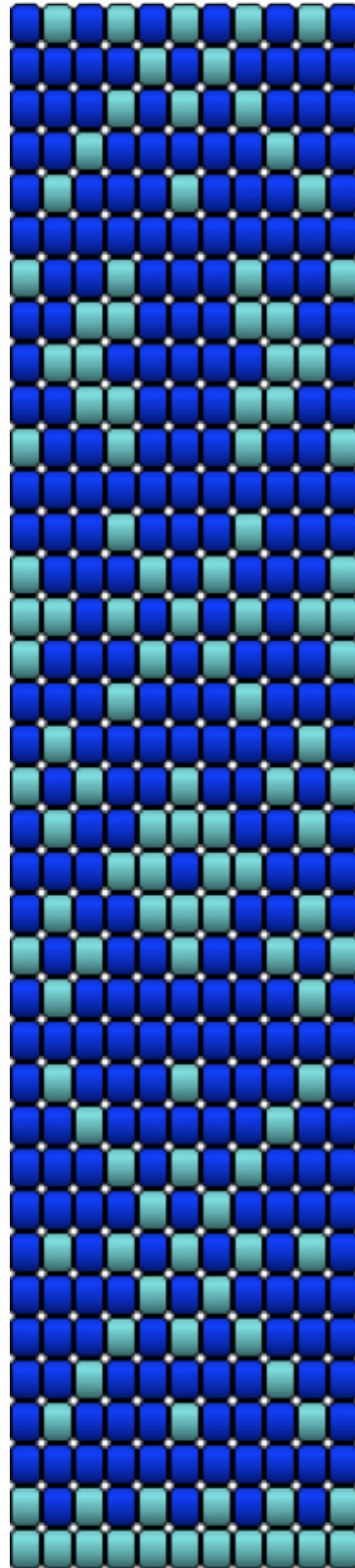
1. Please watch our video: How to Use the Jewel Loom Beading Loom. Please set up your loom as seen in this video with 12 warp threads using the dark blue Nymo. Then begin your loom work by following the blue pattern.
2. As you work you will need to tie off and add new thread as seen in this video: How to Tie Off and Add More Thread in Loom work.
3. When you come to the end of the pattern, please follow along with this video to see how to finish this design: How to Finish Off Traditional Loom Work and Add a Slider Clasp.

4. Simply repeat for the second bracelet using the white thread for the white pattern.

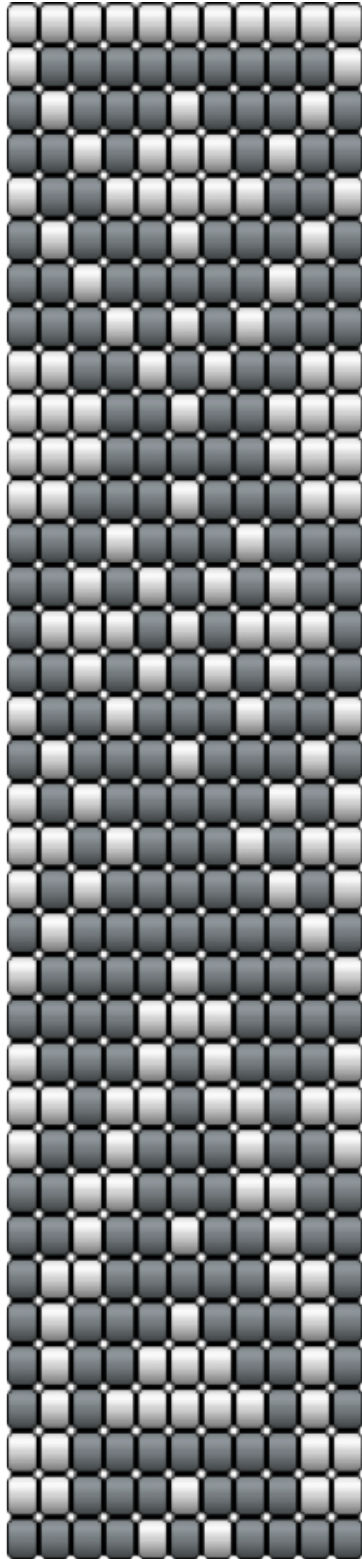
A



B



A



B

