

Finley Bracelet

Project B2358

Kat Silvia

By incorporating the Cymbal Bead Substitutes, this Wrapit Loom bracelet has an added pop of gold among the cream, bronze and rose gold luster beads.

What You'll Need

Cymbal Bead Substitute for Tila Beads, Voutakos, 2-Hole Square 5mm, 10 Pieces, 24K Gold Plated

SKU: BMB-0055

Project uses 6 pieces



Miyuki Tila 2 Hole Square Beads Rose Gold Luster 7.2 Grams

SKU: DBT-301

Project uses 7 pieces



Miyuki Delica Seed Beads, 11/0 Size, 7.2 Gram Tube, 1490 Opaque Bisque White

SKU: DB-1490

Project uses 1 Tube



Miyuki Delica Seed Beads, 11/0 Size, 7.2 Grams, Matte Gold Metallic DB322

SKU: DB-322

Project uses 1 Tube



Griffin Silk Beading Cord & Needle Size 2 Brown

SKU: XCR-9219

Project uses 1 piece



Genuine Leather Cord, Round 1.5mm, By the Yard, Natural Antique Brown

SKU: CHY-1514

Project uses 1 piece



TierraCast Pewter Button, Round Czech Design, 12mm Diameter, 1 Piece, Antiqued Gold Plated

SKU: PND-051

Project uses 1 piece



G S Hypo Cement Precise Applicator Essential!

SKU: XTL-1001

Project uses 1 piece

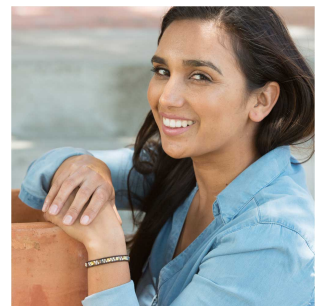


Recommended Tools:

[XTL-3251] BeadSmith Beading Needles, Flexible Twisted Wire FINE, 50 Pack, [XTL-5614]

BeadSmith Tools, Thread Snips 4.25 Inches Long, 1 Piece, [XTL-6130] Wrapit Beading Loom

Craft Kit, Includes Beads, Nylon Cord & Instructions, Makes up to Five Bracelets



Instructions

This bracelet measures approximately 7 inches. To modify the length, simply adjust the length of cord and beads loomed respectively.

1. If you have not worked with the Wrapit Loom before, please watch our video: How to Use the Wrapit Loom by Rainbow Loom.
2. Fold the leather in half, string on the button and tie an overhand knot up close to the button.
3. Move 6.5 inches down the leather and tie another overhand knot. Move about one inch down, enough space for the button to fit through and tie another knot.
4. Place the bracelet in the loom with the button at the front and the space between the two back knots into the back of the loom.
5. Set up your griffin silk as seen in the above video.
6. Once you have your cords ready to go begin by adding one seed bead for the first row. For the second row, add two seed beads. For the third row add three seed beads.
7. For your next row add one hole of one tila bead. Then wrap around the leather once again and go through the second hole of the tila bead.
8. For the next row, add two cream seed beads and two brown seed beads. For the row after that, add two brown seed beads and two cream seed beads. Repeat.
9. Next you will use one gold tila bead substitute in the same manner as above.
10. Repeat this pattern until you have added 7 rose gold luster tila beads and 6 gold tila bead substitutes. Once you have added all of your beads, taper off the end the same as the beginning. A row of three seed beads, a row of two and a row of one.
11. Finish off the cords as seen in the video. Tie them off and add a dab of glue to the knots. Trim the ends and you're all done.