

Bridal Deco Bracelet

Project B2344

Kat Silvia

Subtle and timeless, this peyote bracelet features a design of shimmering silver and white beads in a deco style pattern.

What You'll Need

Miyuki Delica Seed Beads, 11/0 Size, 7.2 Grams, Silver Plated DB551

SKU: DB-551

Project uses 1 Tube



Miyuki Delica 11/0 Seed Bead Matte White Db351 (6.6 Gram Tube)

SKU: DB-351

Project uses 1 Tube



Elegant Elements Beadslides, Seed Bead Slide Tube Clasp Swirling Leaves 29x10mm, Rhodium Plated

SKU: FCL-064

Project uses 1 piece



FireLine Braided Beading Thread, 4lb Test and 0.005 Thick, 15 Yards, Crystal Clear

SKU: XCR-1280

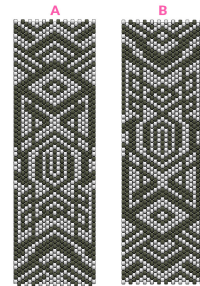
Project uses 1 piece



Recommended Tools:

[XTL-3006] BeadSmith English Beading Needles Size 12 (4 Needles), [XTL-0117] BeadSmith

Ultra Thread Zap, Battery Operated Thread Trimmer, 1 Piece

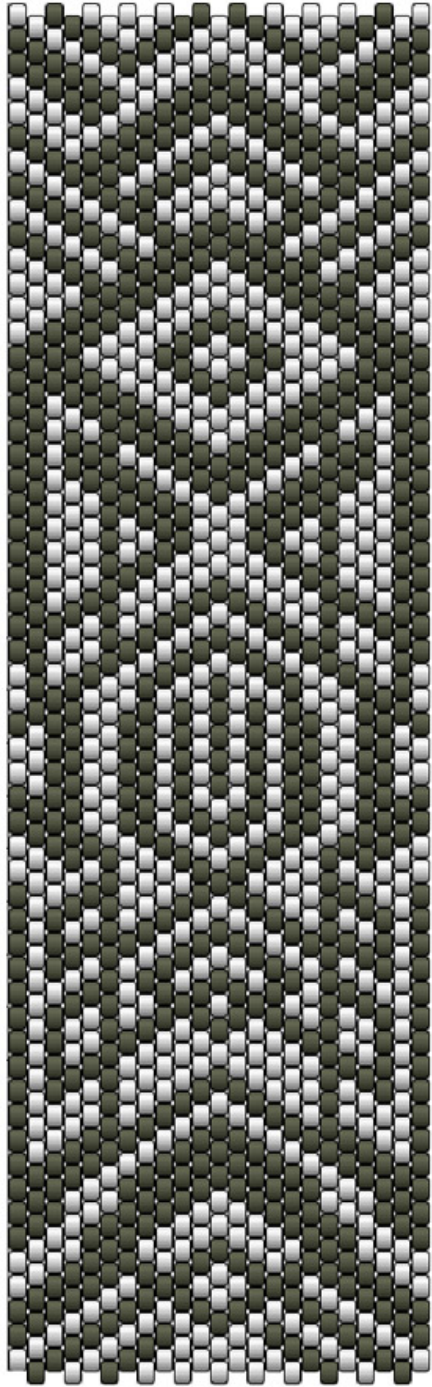


Instructions

This pattern will give you up to a 7.5" bracelet. Please see below for more sizing info.

1. Before beginning this project, please watch our video: How to do Flat Odd Count Peyote Stitch.
2. From what you learned in the video, cut off a length of thread that you are comfortable working with. As you work you will need to tie off and add new thread. Thread your needle.
3. Now that you are ready to begin weaving, take a look at the photo of the pattern. You will notice that there is an A and a B. The bottom of A and the top of B represent the center of the bracelet. Both halves are nearly identical. If you are unsure of the size you'd like, I recommend starting at the top of B and work your way down. Once you get about 3/4 of the way down the pattern measure for 1/2 of your bracelet. For example, if you want an overall 6.5" bracelet, this side should be about 3 inches. Keep in mind that your clasp will add an additional 1/2" to the overall design. If you think you've got it, switch over to weave the second half of the bracelet working on pattern A from the bottom up. Continue to work until your patterns are even on both sides, you may go back and forth a bit, row by row to get it just right. Also if you want a longer bracelet you will need to extend the pattern to your liking.
4. When you are ready to add the clasp, please watch our video: How to Use a Slide Clasp to Finish Peyote Bead Weaving. This video will walk you through how to attach the slide clasp and how to tie off your threads.

A



B

