

Snow Leopard Kumihimo Bracelet

Project B2302

Kat Silvia

Adding a large hole bead to Kumihimo is a great way to update the look in a stylish and sleek fashion.

What You'll Need

Swarovski Crystal, 81974 BeCharmed Pave Leopard Bead 10x22mm, 1 Pc, White & Black

SKU: SWCR-1182

Project uses 1 piece



Toho Round Seed Beads 8/0 81 'Metallic Hematite' 8 Gram Tube

SKU: JSH-0039

Project uses 1 Tube



Toho Round Seed Beads 8/0 761 - Matte Opaque White (8 Grams)

SKU: JSH-0347

Project uses 1 Tube



BeadSmith Super-Lon (S-Lon) Cord - Size 18 Twisted Nylon - Gray (77 Yard Spool)

SKU: XCR-4613

Project uses 1 Spool



BeadSmith Super-Lon (S-Lon) Cord - Size 18 Twisted Nylon - White / 77 Yard Spool

SKU: XCR-4248

Project uses 1 Spool



Magnetic Clasp, Tube Cord Ends Fits 6.2mm Cord, 1 Set, Silver Plated

SKU: FCR-4246

Project uses 1 piece



E6000 Industrial Strength Glue Adhesive (0.18 fl oz)

SKU: XTL-1054

Project uses 1 piece



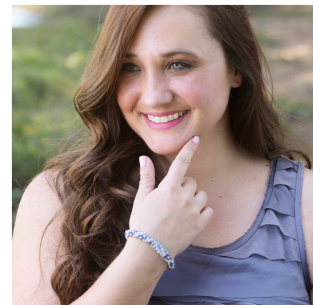
Recommended Tools:

[XTL-5700] Fiskars 5 Precision Tip Scissors - Super Sharp, [XTL-6095] Beadsmith Lightweight

Kumihimo Round Disc Disk For Japanese Braiding and Cording 35mm Hole, [XTL-6063]

Gator Weight For Kumihimo Braiding - 1.6 Ounces (1), [XTL-6105] Beadsmith No Tangle

Flexible Plastic Thread Bobbins For Kumihimo Or Macrame 3 1/2 Inch (4 Pack)



Instructions

This bracelet measures approximately 7 inches. To modify the length, simply adjust the length of the braided portion respectively. Note: You will also need a piece of tape and a scrap of wire or toothpick. Sizing Tip for the beaded portion: 7 beads on each strand equals approximately 1 inch.

1. Please begin by watching our video: How to Braid Beaded Kumihimo and Make a Bracelet. Cut 8 strands of cord 5 feet each in length.
2. Cut 4 lengths of 5 feet each of white cord. Then cut 4 lengths of 5 feet each of grey cord.
3. Gather all 8 cords and tie an overhand knot. Holding the board facing up, thread this knot through the center hole. Place a gator weight to the end.
4. Place one white cord in the notch between 31 and 32; notch between 8 and 9; notch between 16 and 17; notch between 24 and 25.
5. Place one grey cord in the notch between 32 and 1; notch between 7 and 8; notch between 15 and 16; notch between 23 and 24.
6. String on 18 white seed beads to each white cord. String on 18 grey seed beads to each grey cord.
7. Begin the braiding as shown on in the video. Braid about one inch of cord before you begin adding the beads.
8. Continue braiding until you have added all of your beads.
9. Next, please watch our video: How to Add a Large Hole Bead to Patterned Kumihimo. Once you have built up your center, slip on the large hole bead.
10. Then string on 18 white seed beads to each white cord. String on 18 grey seed beads to each grey cord. Finish off the beaded portion then continue braiding for one inch without beads.
11. Carefully take the braid off of the disc, trim the bobbins off and tie an overhand knot.
12. To see an example of this finishing technique you can watch the end of our video: How to Make the Deluxe Beaded Kumihimo Bracelet Kit with Spiral Bicone Focal. To attach the clasp, take a length of super-ilon cord and tie an overhand knot over the braided portion of the end of the Kumihimo without the beads. Tie a second overhand knot to secure. Then take the tails and wrap around the braided portion to bulk up the tail end. When it is the right bulk to fit in the well of the clasp, tie another knot to secure and trim the ends with your scissors.
13. Trim the end of the braided portion so it fits inside the well of the clasp. Using a toothpick or scrap of wire, add a dab of E6000 to the well of the clasp. Place the end of the braid into the clasp. Set aside. Move to the other end of the bracelet and repeat the above steps to complete the clasp on this side of the bracelet. Make sure to leave the clasp un-clasped as it dries completely.