

Spring Floral European Style Cuff

Project B2041 [Skill Level: Beginner]

Designer: Kat Silvia

This flowery cuff features the SWAROVSKI ELEMENTS European Style large hole beads in a light spring color palette.

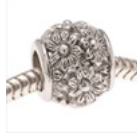
What You'll Need

Silver Tone Medium Bangle Cuff Bracelet For European Style Large Hole Beads Screw End



SKU: AXC-9409
Project uses 1 piece

Silver Tone Ornate Daisy - European Style Large Hole Bead (1)



SKU: BMB-8368
Project uses 1 piece

Silver Plated European Style Large Hole Bead 'Lavender And Yellow Flowers'



SKU: BMB-8399
Project uses 1 piece

Sterling Silver Rondelle Smart Bead Spacer Stoppers - Fits European Style Bracelets - 7x2.7mm (4)



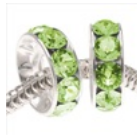
SKU: BMB-2844
Project uses 2 pieces

SWAROVSKI ELEMENTS Crystal BeCharmed Pave Bead Light Amethyst - European Style Large 4.5mm Hole (1)



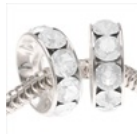
SKU: SWBB-5118
Project uses 1 piece

SWAROVSKI ELEMENTS Crystal Silver Plated BeCharmed Rondelle 4.5mm Large Hole Bead Peridot (2)



SKU: SWBB-5087
Project uses 2 pieces

SWAROVSKI ELEMENTS Crystal Silver Plated BeCharmed Rondelle 4.5mm Large Hole Bead White Opal (2)



SKU: SWBB-5079
Project uses 2 pieces



Instructions:

The bracelet included in these instructions is a medium size. It also comes in a large size. Choose the size you'd prefer.

1. Unscrew the ball at the end of a silver plated bangle cuff bracelet for European Style beads.
2. Put your European Style beads onto the bracelet in this order: one silver bead spacer stopper, one peridot rondelle, one lavender and yellow flowers bead, one white opal rondelle, one Pave light amethyst bead, one peridot rondelle, one silver ornate daisy bead, one white opal rondelle and one silver bead spacer stopper.
3. Screw the ball back onto the end of the bracelet.

Variations

Customize this bracelet with your favorite Spring color of SWAROVSKI ELEMENTS Pave beads.

When substituting in items, pay attention to sizes and styles to make sure all your pieces will fit together.



Keywords: Spring, European style large hole bead, large hole, bangle, cuff, SWAROVSKI ELEMENTS, btq-banglesandcuffs