

Witchy Woman Bracelet

Project B135

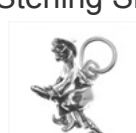
Designer: Andrea Morici

Made with Miyuki's new Tila beads, this delightful bracelet isn't just for Halloween. Put it on whenever you are feeling a bit wicked.

NOTE: The clasp used in this project has been discontinued and has been replaced with another clasp. The overall look of the bracelet will not change much, but the clasp will be slightly smaller than the one pictured.

What You'll Need

Sterling Silver Charm Halloween Flying Witch 17X14mm (1)



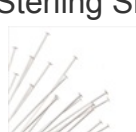
SKU: PND-2018
Project uses 1 piece

Sterling Silver Sleek Wrap Toggle Clasp 15mm (1)



SKU: FCL-3015
Project uses 1 piece

Sterling Silver Head pins 24 Gauge 2 Inches (10)



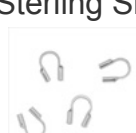
SKU: FHP-02520
Project uses 2 pieces

Sterling Silver Open Jump Rings 5mm 18 Gauge (10)



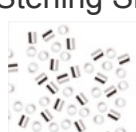
SKU: FJR-03054
Project uses 4 pieces

Sterling Silver Wire & Thread Protectors Guards .031 Inch (10)



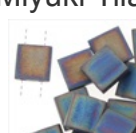
SKU: FCR-4149
Project uses 2 pieces

Sterling Silver Micro Crimp Beads 1.5mm x 2mm (50)



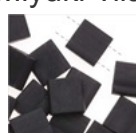
SKU: FCR-01152
Project uses 2 pieces

Miyuki Tila 2 Hole Square Beads Matte Black Ab 7.2Gr



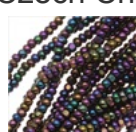
SKU: DBT-4013
Project uses 12 pieces

Miyuki Tila 2 Hole Square Beads Matte Black 7.2Gr



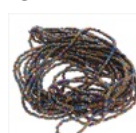
SKU: DBT-4011
Project uses 9 pieces

Czech Charlotte Seed Beads 13/0 Purple Iris 1/2 Hank



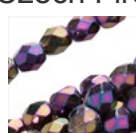
SKU: BCS-2250
Project uses 10 inches

Czech Seed Beads Mix Lot 11/0 Heavy Metal Metallic Blue/Green/Purple 1/2 Hank



SKU: BCS-1967
Project uses 10 inches

Czech Fire Polish Glass Beads 4mm Round Purple Iris (50)



SKU: BCP-3439
Project uses 10 pieces

Set of 6 Big Eye Beading Needles in 4 Sizes - Easiest Needles To Thread!



SKU: XTL-3165
Project uses 1 piece

Wildfire Thermal Bonded Beading Thread .006 Inch - Black - 50 Yd



SKU: XCR-8935
Project uses 12 feet

Instructions:

- To make this project, you must be familiar with basic bead stitching techniques. The technique used to create this bracelet is essentially a ladder stitch (modified somewhat, due to the fact that Tila beads have two holes rather than one) with a pico edge. If you are just starting out with beading, we recommend purchasing the book Teach Yourself Visually Jewelry Making & Beading (ZBK-1130). There is a wonderful section explaining basic bead weaving techniques, including how to weave a ladder. To begin, cut a piece of Wildfire thread approximately two yards in length. Single-thread your Wildfire onto your needle. Secure the end of the thread with a stopper bead or a Bead Stopper.
- Thread a sterling silver crimp tube, but do not crimp it yet. Thread approximately three-quarters of an inch of alternating 15/0 seed beads and 11/0 seed beads. (NOTE: the overall length of this bracelet is just under eight inches. If you would like to adjust the length, this is the section in which you would do so. Either omit or add the alternating seed beads at both ends of the bracelet to achieve desired length.)
- Thread your needle down through one of the holes on an AB black Tila bead. Add three quarters of an inch more of alternating 15/0 seed beads and 11/0 seed beads. Thread your needle through the crimp tube, up through the sterling silver thread protector, back through the crimp tube, through the original row of alternating seed beads, through the same hole in the AB black Tila bead, back through the second row of alternating seed beads, and back up through the crimp tube. Continue this thread path once more, and stop when the needle is protruding from the Tila bead. Now you must crimp the crimp tube. Instead of doing this in a traditional manner, use a pair of super-fine chain nose pliers (XTL-5450) to flatten the crimp firmly so that it aligns with the thread protector. Be very careful when you are flattening the crimp bead not to crush any of the nearby seed beads or the thread protector.
- With your thread now coming out of the first hole of the first Tila bead, you can now string on a 15/0 seed bead, an 11/0 seed bead, and another 15/0 seed bead. This is your pico edge. Thread your needle down through the other hole in the same Tila bead, and add another pico edge on the other side of the Tila bead. Follow the same thread path through this group of beads one more time, coming out of the second hole of the Tila bead.
- Thread your needle through a second Tila bead, this time plain black. Thread your needle through the previous Tila bead's second hole, and back through the first hole of the plain black Tila bead. Repeat the previous steps to create the pico edge on the Tila bead.
- Continue in this manner, sewing together five alternating black and black AB Tila beads using the ladder stitch with a pico edge.
- After you have a section sewn that is five Tila beads long, create a space between this section and the next section of five by threading a 15/0 seed bead, an 11/0 seed bead, a 4mm purple iris fire polish bead, another 11/0 seed bead, and another 15/0 seed bead. Thread this sequence on the top and bottom of the bracelet between sections.
- Sew another section of five ladder stitched Tila beads with a pico edge.
- Create another spacer section like you did in step 7. This time, add a single black Tila bead with a pico edge. This is the center of your bracelet.
- From this point on, stitch the remainder of the bracelet as a mirror image of the first half. This includes the end of the bracelet with the thread protector and flattened crimp bead.
- Open two sterling silver jump rings. Use one to attach the bar part of the toggle clasp to one end of the bracelet. Use the other to attach the ring part of the toggle clasp to the other end of the bracelet. Close both jump rings.
- Onto a headpin, thread:
 - a 15/0 seed bead
 - an 11/0 seed bead
 - a 4mm fire polish bead
 - another 11/0 seed bead
 - another 15/0 seed bead
- Onto another headpin thread:
 - a 15/0 seed bead
 - a 4mm fire polish bead
 - two 11/0 seed beads
 - two 15/0 seed beads

Create a wrapped wire loop on each of the headpins and trim off excess wire.

- Open two more sterling silver jump rings and thread them through the loop at the top of each headpin dangle.
- Open the jump ring on the witch charm.
- Add the witch charm and both headpin dangles to the ring part of the toggle clasp and close all jump rings again.